

Lake View Park



\$ 1,000,500



72 Windsor Road, Asheville, NC 28804

WEB: 72WindsorRoad.com

- » Beds: 4 | Baths: 2 Full, 1 Half
- » MLS #: 3405622
- » Single Family | 4,072 ft² | Lot: 27,443 ft² (0.63 acres)
- » Tall, Stately Windows & Projected Bay Windows
- » Beautiful, Green, Expansive Yard
- » Great, Old Trees and Koi Pond
- » Walkable to Beaver Lake & North Asheville Amenities & Fine Dining

QR Code



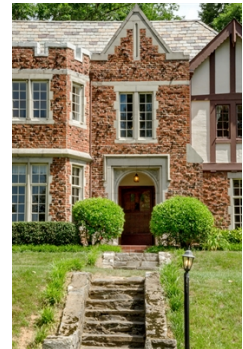
**Christine and
Simone**

(828) 258-2953 (Office)
(828) 337-2241 (Christine)
(828) 989-2145 (Simone)
Simone@preferredprop.com

<http://www.PreferredProp.com/agents>

Preferred Properties

Preferred Properties Of Asheville
39 Woodfin Street
Asheville, NC 28801
(828) 258-2953



Ambiance and elegance in this English Tudor home, perched above Windsor Road in a lush garden setting. Built in 1924, this home features many authentic tudor features, including turrets, tall, stately windows, multiple-paned with projected bay windows, enclosed entry over the main windowed arched door, timbering, chinked red brick, Quion-like stone blocks, Heraldic stone details, pitched slate roof & decorative chimneys. Impeccable maintained, it has a large family room, dining room with vintage paper, living room with elegant fireplace surround, gorgeous hardwoods. A small sitting room and a covered outside porch gives extra areas for entertaining and relaxation. The bathrooms are original and works of art. The grounds offer beautiful green expanses, great old trees, shade, Koi pond, and a small moat with a stone bridge. Walkable to Beaver Lake, The Audubon Park, North Library & North Asheville amenities & fine dining.

